

Edith Cavell



Key Vocabulary

- Nutrition
- Healthy
- Protein
- Carbohydrates
- Dairy
- Fat
- Exercise
- Hygiene
- Portrait
- Self-portrait
- Facial features
- Skin tones
- Represent
- Cubism
- Edith Cavell
- Nurse
- World War 1 (WW1)
- Norwich
- Norfolk
- Belgium
- Law
- Significant
- Equality
- Arrested
- Inspire
- Soldiers
- Worries
- Hopes
- Fears
- Responsibilities
- Rights
- Rewards
- Consequences
- Choices

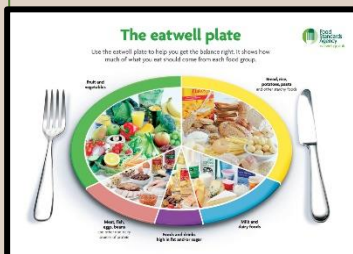
Science

Animals including Humans - Growth

Animals, including humans have offspring which grow into adults.

Animals and humans have basic needs for survival- we will be thinking about what humans need to survive.

Exercise, healthy eating, a balanced diet and hygiene are all very important for successful growth and health.



The Arts

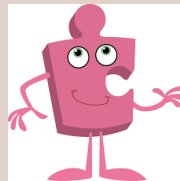


Music:

You can use your imagination to create wonderful pieces of music. We will continue to explore music and pulse and will be learning to play the ukelele with Mr. Hall the 'Music Man'.

Art:

A portrait can show more than just a person's looks, it can show their emotion, status and personality. Whilst looking at famous artists work, we will be creating our own self-portraits. These can be painted in a range of ways – we will be exploring cubism.



PSHE:

Being me in my world!

We all have hopes, fears and worries within our lives. It is important that we can talk about these and find ways to overcome them. We will be thinking about our role within our classroom and the importance of following the Jigsaw Charter to ensure everyone feels safe and happy.

Humanities

History:

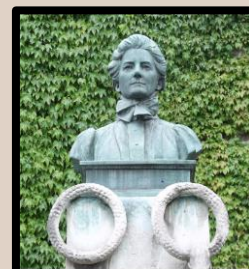
Who is Edith Cavell?

Edith Cavell was born in Norfolk in 1865. Edith was a nurse during World War 1, she helped many soldiers to recover from injuries.

Edith Cavell was executed in 1913 for helping 200 soldiers to escape Belgium. She is buried at Norwich Cathedral, Norfolk. We will be thinking about the life of Edith Cavell and the significant role she played in history.

Geography:

This half term Geography is not explicitly taught however, we will be using our map reading skills to locate the birthplace of Edith Cavell and we think about our local area when understanding that Edith was born and buried in Norfolk.



Literacy/ Writing

Develop positive attitudes towards and stamina for writing by:

Writing about real events

Writing poetry

Writing for different purposes

Consider what to write before writing.

Write punctuated sentences: full stop, capital letters, exclamation marks, question marks.

Computing

Use technology safely and respectfully, keeping personal information private; identify where to go for help and support when they have concerns.

History

The lives of significant individuals in the past who have contributed to national and international achievements.

Significant historical events, people and places in their own locality.

PSHE

That in school and in wider society they can expect to be treated with respect by others, and that in turn they show respect to other.

Maths (Autumn term)

Count in steps of 2, 3, and 5 from 0 in tens from any number, forward and backward.

Recognise the place value of each digit in a two-digit number (tens and ones)

Compare and order numbers from 0 up to 100 use $<$ $>$ and $=$.

Read and write numbers to at least 100 in numerals and in words.

Recall and use addition and subtraction facts to 20 fluently and derive and use related facts up to 100.

add and subtract numbers using concrete objects, pictorial representations, and mentally, including:
a two-digit number and ones
a two-digit number and tens
two two-digit numbers
adding three one-digit numbers

identify and describe the properties of 2-D shapes, including the number of sides and line symmetry in a vertical line.

- identify and describe the properties of 3-D shapes, including the number of edges, vertices and faces
- identify 2-D shapes on the surface of 3-D shapes, [for example, a circle on a cylinder and a triangle on a pyramid]
- compare and sort common 2-D and 3-D shapes and everyday objects

Art

Use a range of materials creatively to design and make products.

To use drawing, painting and sculpture to develop and share their ideas, experiences and imagination.

Taught about the work of a range of artists, linking to their own work.

Music

Use their voices expressively and creatively by singing songs and speaking chants and rhymes.

Play tuned and untuned instruments musically .

Science

Notice that animals, including humans, have offspring which grow into adults.

Find out about and describe the basic needs of animals, including humans, for survival (water, food and air)

Describe the importance for humans of exercise, eating the right amounts of different types of food and hygiene.

Edith Cavell

Engagement

We have received a special package, inside there are a selection of items including- an army helmet, a first aid kit, bandages, stethoscope handcuffs etc. ! We must see if we can work out who they might be using the clues? What could their job role be? When- is it now or in the past?



As Historians we will be learning about Edith Cavell and her role as a nurse during World War 1. We will be thinking about why she was arrested and the legacy she left behind. We will be using our Geography skills to find out where she lived and where she is buried in Norfolk.

As scientists, we will be learning about what animals, including humans, need to survive. We will be thinking about healthy eating, exercise and good hygiene.

As Musicians we will be exploring music and playing musical instruments when taking part in the 'music man' sessions.

In Art we will be creating our own self- portraits using a range of art techniques. We will be looking at artist work and creating our own cubist portraits inspired by the artist Picasso.

Engage

We will be learning about a significant person in history who was born in Norfolk. We will be acting out her life and looking at the impact she had.

Educate

We will foster a love of learning as we explore the past and how to be kind and caring members of society.

Empower

We will be thinking about respecting our own feelings and those of others. We will learn the importance of being a valued member of the class and the wider society.

Product / Experience / Outcome

Art exhibition – our self portraits and cubism portraits!
Newspaper articles – aged and on display (record us reading them)

Homework ideas

<p>Can you create your own number cards to 100, shuffle them and then place them in order?</p> <p>Remember what name your numbers go!</p> <p>Pick two numbers and add them together!</p>	<p>Can you create your own self-portrait in a different style?</p> <p>You could use loose parts or the style of a different artist?</p> <p>Take a photograph!</p>	<p>Can you write a letter to your friend or a member of your family explaining to them why they are important to you?</p> <p>Remember to think about the format you would use for a letter.</p>	<p>Can you design a healthy meal to eat at home with your family?</p> <p>Make sure it is balanced!</p> <p>Send a photograph.</p>
<p>Can you go on a 3D and 2D shape hunt at home and in your local area?</p> <p>Take photographs or draw the items!</p> <p>What shapes do you find more of?</p>	<p>Can you make a poster all about good personal hygiene?</p> <p>Remember to include pictures and catchy headings to make people want to read them!</p> <p>Bring them into school for us to see.</p>	<p>Can you create a fact file about the life of Edith Cavell?</p> <p>Make sure you rehearse your sentence first before writing and remember all your writing rules!</p>	<p>Can you use your artist skills and paint/draw a portrait of a member of your family?</p> <p>Remember to use the skills you have learnt within school.</p>



Lesson Sequence

- 

1. Describe the needs of animals for survival
- 

2. Describe the needs of humans for survival
- 

3. Explore the importance of eating the right food
- 

4. Describe what a healthy, balanced diet looks like
- 

5. Investigate the impact of exercise on our bodies
- 

6. Investigate hygiene

Pre-cooked Food



Processed Food



Fresh Food



Frozen Food



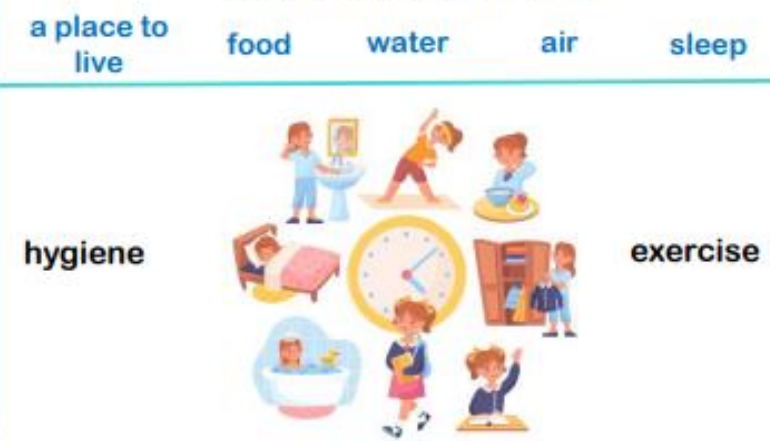
Tinned Food



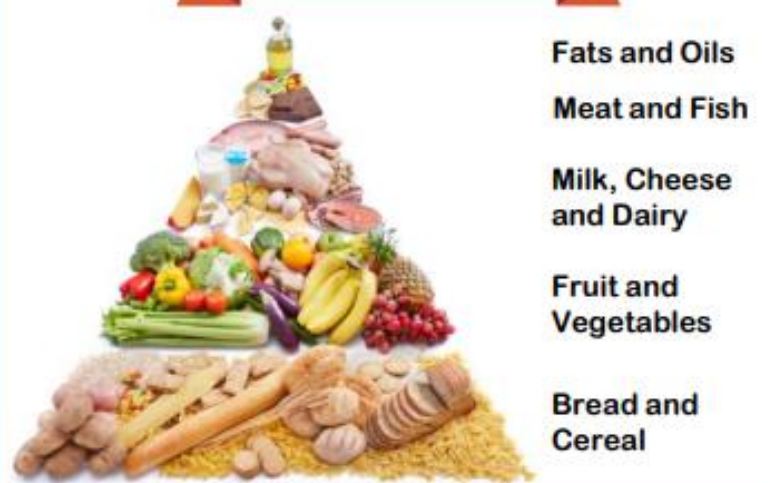
Each serving (150g) contains

Energy	Fat	Saturates	Sugars	Salt
1046kJ 250kcal	3.0g LOW	1.3g LOW	34g HIGH	0.9g MED
13%	4%	7%	38%	15%

Daily Needs of a Human



Food Pyramid





Rocket Words

nutrition	food that provides nourishment to live and grow
healthy	being well and fit
protein	a food group, consisting of meat, seafood, eggs, nuts and more, which help the body repair cells
carbohydrate	a food group, including rice, bread and pasta, which give the body energy
dairy	a food group, including cheese, milk and yoghurt, which contains calcium to keeps our bones strong
fat	a food group that are important for energy but only needed in small amounts
exercise	activity requiring physical effort, carried out to improve health and fitness
hygiene	the things you can do to keep yourself and your surroundings clean

History study- Year 2 Autumn 1
Edith Cavell

Edith Cavell

Norfolk, England

Born 1865- Died 1915

Nurse in World War 1



Edith Cavell was a nurse in World War 1.



Edith helped wounded soldiers to get better during WW1.

Edith Cavell was executed in 1915 for helping 200 soldiers escape Belgium.



Edith is buried at Norwich Cathedral.

Key Vocabulary:

Edith Cavell	nurse	World War 1
Norwich	Norfolk	Belgium
law	significant	equality
arrested	inspire	soldiers



portraits

Leonardo da Vinci



Mona Lisa (1503-06)

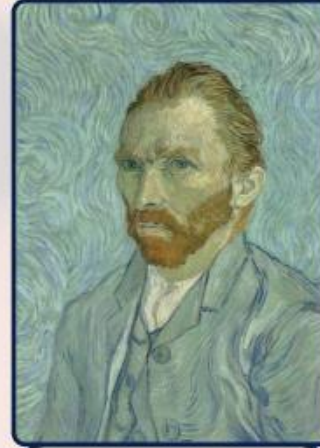
Hans Holbein the
Younger



Edward VI as a Child
(1538)

self-portraits

Vincent Van Gogh



Self-portrait (1889)

Pablo Picasso

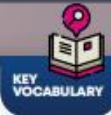


Self-portrait (1907)

Rembrandt van Rijn



Self-portrait (1659)



KEY VOCABULARY

portrait

a piece of **artwork** showing a person

self-portrait

a portrait that an artist creates of themselves

facial features

eyes, nose, mouth, ears

skin tone

the **shades** of a person's skin

represent

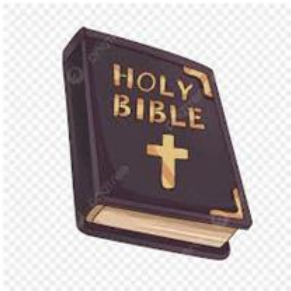
how an artist shows **what a person is like in a portrait**

cubism

a way of painting and drawing where artists show **more than one view of something in the same picture**, like looking at many sides of a cube at once

RE Knowledge Organiser Year 2 Autumn 1 Christianity

Is it possible to be kind to everyone all of the time?



The parables are from the first part of the bible known as the Old Testament.

Jesus told stories, known as parables, to people which helped them to understand the importance of being kind to each other and help others in need.



Christians follow Jesus' example of being kind to people. Christians believe that they should care about people, even if they may not like or know them. This is important to Christians.



Jesus told a parable about a good Samaritan who helped someone in need.

Key Vocabulary

Samaritan	A person from Samaria, a country near where Jesus was teaching.
Levite	A legal expert who would have known that it states in the law that he should help an injured man.
Pharisee	A strictly orthodox Jew who followed closely to the rules and scriptures.
Parables	Stories Jesus told